

Junior School Art Club

An artist, Rachel Walton, visited the Garden Suburb Junior School to work with the children in Art Club comprising thirty Year 4 children. She prepared activities on sculpture, painting, drawing and collage. The school won a cash award from Education

Extra, which paid for the artist. We also won a cash award from GLS Fairway Limited, educational suppliers, to help pay for materials. Art Club, run by Mrs Harvey and Mrs Benham, is at 3.30 every Wednesday.

J E Gribble



The Residents Association Clubs

These three successful clubs were started five years ago as a result of a questionnaire sent to all residents by the Membership Committee with the then Chairman's Envelope. This is the envelope that contains the new yearly subscription card and the message for the year to all residents which will begin the year to follow.

The idea was the brain child of Peter Phillips, at that time Secretary of the Membership Committee. The questionnaires were sorted and analysed by Peter and myself, discussed with the committee, names were selected who looked promising and approached with a view to setting up three clubs, the Theatre, Gourmet and Scrabble, all of which now run successfully.

Most importantly the idea behind the general idea was the recruitment of new members, working on the assumption that if you give people what they want, they will respond in whatever way they can. It gave the Association more members, more money and more relevance to the Association in relation to its members and last but not least we gained helpers in various fields.

Last year we added the Croquet Club to the list, open to residents of all ages who like to play croquet during the summer evenings.

I must add that without two generous loans from the Residents Association the Theatre and Croquet Clubs could not have started.

Anne Lawson

Local artists at the Gallery

In the eight months since the Residents Association's "Garden Suburb Gallery" opened at the Temple Fortune end of Hampstead Way it has proved to be very popular with residents as a place to see the work of more than 20 local artists, with pictures, pottery and crafts ideal for presents or furnishing the home. The range of Suburb books and cards seems to have met a demand as hundreds have been sold.

First featured artist

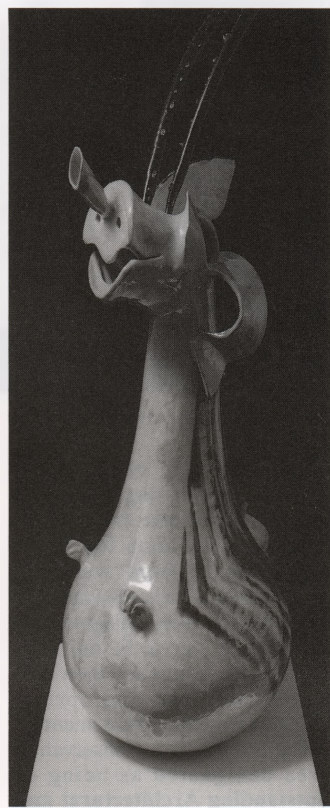
From mid May the Gallery will be mounting its first show devoted to the work of one artist, Sheila Seepersaud-Jones who works from her studio in Brookland Rise. Sheila's work has been the subject of much discussion in the arts press over the question of whether her ceramic pieces are 'craft' because it is ceramic or 'sculpture', and therefore 'art' because of its sculptural forms.

Whatever, her work is well worth seeing. As well as as many large pieces as the small Gallery can fit in, we will have many smaller pieces at prices from about £18.



Performing artist

Sheila was born in Guyana, South America. Educated in England, she has always combined her art with a part-time



Portrait of a lady

nursing career, for example achieving a BA(Hons) Fine Art (Sculpture) not long after qualifying as a State registered midwife. She has been a visiting lecturer at the University of Houston and Artist in Residence at the Royal Festival Hall and has had more than 50 exhibitions of her work. Asked how she manages to do all this as well as nursing at the Royal Free, Sheila replies that she gets up terribly early in the morning!

The exhibition opens on May 18 and runs to the end of June. Of course the books, cards and work of all our artists will also be available. **Richard Wakefield**

Family Fun at the Pavilion

The date for the Pavilion Children's Centre Summer Festival has been named as Sunday 12 May.

Now in its 13th year, the annual fundraising event held by the volunteer-run Hampstead Garden Suburb based playgroup promises a fun day for all the family.

Attractions will include carousel rides, pony rides, face painting, a tombola and more craft stalls than ever with local artists displaying their wares. This year also sees the introduction of an aerobics 'stepathon' which, like the raffle, will raise money for both the playgroup and the Children's Leukaemia Ward at the Royal Free Hospital.

Litchfields Estate Agents will again be sponsoring the event; other local companies lending support include the British Bathroom Centre, Clive Sutton Motor Group, Kingsley School of English, Tesco Stores and Safeway.

Offers of cakemaking, help on the day and tombola prizes can be made by telephoning Laura Barnett on 458 8925.

Proms at St Jude's June 25 - 30

A magnificent midsummer music festival in the setting of Sir Edwin Lutyen's architectural masterpiece St Jude-on-the-Hill.

To be launched by the TV and Radio personality John Amis, this is a major fundraising event for charity, the beneficiaries being Save the Children and the St Jude's Organ Appeal. Eighty musicians will be taking part, incorporating local professional talent, rising young stars, the cream of some of London's music colleges along with international celebrities in eight widely varying concerts.

Light refreshments will be available in a marquee on the lawn. To make your bookings call 01395 223400, credit cards accepted. Tickets (conc.) £2-£10, season ticket £35. Also available at the door on the night.

Friends of Northway Gardens


Since the formation of FONGS in Autumn 1994 the steering committee has been active in developing a good relationship with Barnet Parks Department who have listened to our requests and, as a result, Northway Gardens is showing considerable improvements and these, we hope, will continue.

The public tennis courts are now in better playing order and are weeded and de-mossed, and fencing has been repaired. We very much hope that re-surfacing will be put on the Parks Dept's programme soon.

The Rose Garden has had a lot of attention this winter with the adding of several lorry loads of mushroom compost. We are delighted that clematis and climbing roses have been planted by the pergola. The maintenance of grassed areas which has been poor is beginning to improve; we will be monitoring this. Borders and paths have been tidied and weeded. The derelict putting green hut has been removed and the area will be turfed. Benches have been fixed and graffiti removed. A number of trees have been thinned and cropped and we have been promised some replanting of trees in the area between The Bungalow and the Electricity Sub-station.


A couple of months ago we were asked to comment on a proposal to re-site the children's play area to a triangle of grass near the Northway entrance to the Gardens. After seeking opinions from local residents, the steering group rejected the proposal on the grounds that the re-siting was unnecessary. You will have noticed that the old Park Keeper's Hut has been sold and attractively converted into a café/restaurant which is due to open in mid-April. We hope this will be successful and an added amenity for the Gardens and local residents.

Sally Lewis



ANNEMOUNT

A Nursery and Pre-Prep School



A Junior Prep School for boys and girls aged 2 1/2 - 7 years, offering a varied curriculum of a very high standard, set in its own large green setting.

Our activities include: gym, swimming, drama, dancing, French, piano and Suzuki violin.

For further information, please telephone **0181-455 2132**

**18 HOLNE CHASE
HAMPSTEAD GARDEN SUBURB
LONDON N2**

Why not have all your recyclable waste collected from your own doorstep? Its simple and inexpensive to recycle ALL of your

- : waste paper, newspaper, card, cardboard boxes
- : glass bottles and jars
- : food tins, drinks cans, aluminium foil (sold to raise funds for M.I.N.D.)
- : clear plastic bottles
- : old clothes

Established in 1993 Go Green has grown into a successful small business covering much of Barnet, Camden and Haringay, and collecting from over 150 households on the Suburb.

Call for more information with no obligation

Licensed by the London Waste Regulation Authority No. GTL 370222



GREEN

RECYCLING COMPANY

12 Milbro Court, 35 Anson Road, Tufnell Park, London N7 0RB
Telephone: 0171 700 7990

The Gallery is a focal point for the Residents Association, run by residents for residents, where you will find the work of some twenty artists. You can also find out all you need to know about the work of the RA and the Suburb, Commissions are welcomed for portraits of houses, people, even pets.

WATERCOLOURS

PASTELS

OILS

ETCHINGS

LITHOGRAPHS

BOOKS

SUBURB MAPS

CRAFTS

CARDS

POTTERY

The Garden Suburb Gallery

At the Temple Fortune end of Hampstead Way 0181 455 7410

A Hampstead Garden Suburb Residents Association initiative

